



ENVIRONMENTAL

CASEWORK	NO ADDED urea formaldehyde adhesives in all our veneer core plywood cabinetry for standard wood species
PRE-FINISHED CABINET INTERIORS	Roll coated finish with UV curing process <ul style="list-style-type: none"> No formaldehyde gasing No HAPs No VOCs
DRAWER BOXES	Highly durable water based finishes <ul style="list-style-type: none"> No formaldehyde No HAPs No VOCs



FRONT FRAME

- Dimensions:
- thickness = .75"
 - rail width = 1.5" (top & bottom)
 - stile width = 1.5"

Construction = blind mortise & tenon

Material = solid wood matching job specie

CABINET SIDES

Dimensions = .5" thick

- Construction
- French dovetail & plow to receive top & bottom
 - plowed grooves to receive back
 - tongue and groove joint to receive front frame

Material = birch plywood

CABINET TOPS & BOTTOMS

Dimensions = .5" thick

- Construction
- French dovetails interlock with sides
 - plowed grooves receive back
 - tongue and groove joinery receives front frame

Material = birch plywood

Note: Base cabinets have partial dust tops. All wall cabinet bottoms are finished to match exterior.

CABINET BACKS

Dimensions = .25" thick

Construction = inserted into plowed grooves in cabinet sides

Material = birch plywood

HANGING CLEATS

- Dimensions
- thickness = .75"
 - width = 3"

- Construction
- concealed
 - interlocking with cabinet back and sides

Material = solid wood

SHELVES

Dimensions = .75" thick

- Construction
- banded on front edge
 - 32 mm spaced shelf rests

Material = birch plywood

CABINET INTERIORS

Material = birch plywood

- Finish
- sealed and varnished
 - open cabinets can be finished to match the exterior
 - glass door sections can be finished to match the exterior

CABINET TOE KICKS

- Dimensions
- recessed kicks are 3" deep x 4" high (standard)
 - custom dimensions available
 - flush closed toe kicks available

Material = toe kick covers match exterior specie and finish

Manufacturer: **Signature Custom Cabinetry, Inc.**
 Product Category: **Custom Face Frame Cabinets**

Professional Memberships

Member
NKBA
 KITCHEN CABINET MANUFACTURERS ASSOCIATION

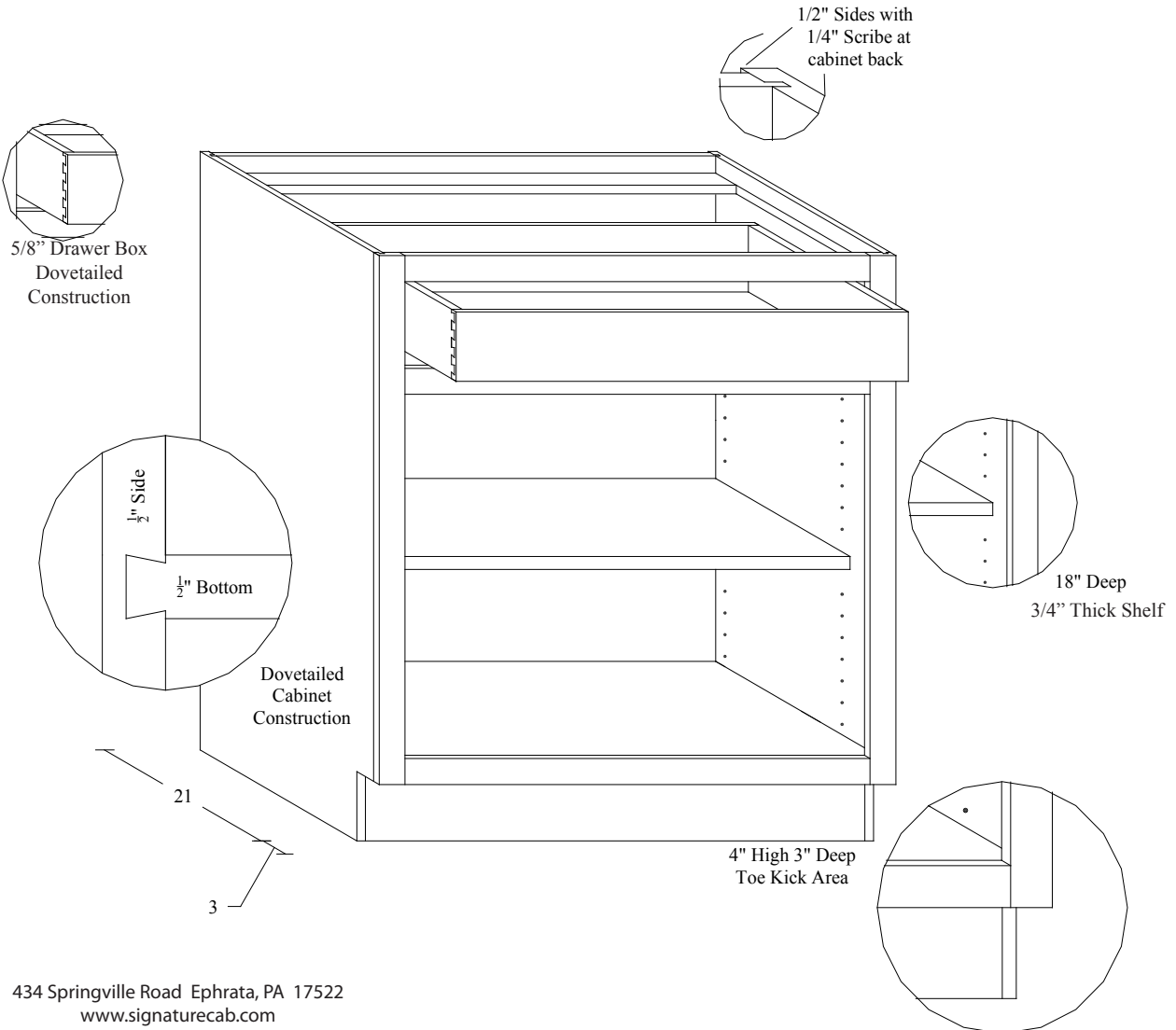
QUALITY. ADVOCACY. LEADERSHIP.
KCMA
 KITCHEN CABINET MANUFACTURERS ASSOCIATION



Architectural Specifications - Custom Face Frame Cabinetry (continued)

DRAWER BOXES	
Dimensions	<ul style="list-style-type: none"> side thickness = 5/8" bottom thickness = 1/4"
Construction	<ul style="list-style-type: none"> dovetailed bottoms plowed into all four sides drawer fronts screwed to boxes
Material = solid hard wood	
Slides	<ul style="list-style-type: none"> concealed full extension ball bearing soft close available
DOORS AND DRAWER HEADS	
Dimensions = available in both 3/4" and 1" thickness	
Construction	<ul style="list-style-type: none"> both mortis & tenon and mitered (depends on door style selected) floating solid wood panel (allows for natural wood expansion with affected functionality of door)
MISCELLANEOUS	
Finishes	<ul style="list-style-type: none"> both wipe on and sprayed applications (varies with colors and stains vs. paints) sealer applied prior to top coat top coat = durable chemically resistant catalyzed conversion varnish
Hinges	<ul style="list-style-type: none"> non mortised onto face frame barrel style hinges are extruded solid brass
Magnetic Catches	<ul style="list-style-type: none"> installed to hold doors closed in correct alignment soft close option available
Hardware	<ul style="list-style-type: none"> selection of complimentary decorative hardware

Architectural Specifications



Manufacturer: **Signature Custom Cabinetry, Inc.**
Product Category: **Custom Face Frame Cabinetry**

5-2009

434 Springville Road Ephrata, PA 17522
www.signaturecab.com

FACE FRAME CABINETRY

Eco-Friendly: This document is printed on FSC mixed papers which includes 10% post-consumer waste fiber.