



ENVIRONMENTAL

CASEWORK	NO ADDED urea formaldehyde adhesives in all our veneer core plywood cabinetry for standard wood species
PRE-FINISHED CABINET INTERIORS	Roll coated finish with UV curing process <ul style="list-style-type: none"> No formaldehyde gasing No HAPs No VOCs
DRAWER BOXES	Highly durable water based finishes <ul style="list-style-type: none"> No formaldehyde No HAPs No VOCs



CABINET BOX

Dimensions = .75" thick

Construction

- doweled using 8mm fluted wood dowels

Material = engineered substrate with melamine or wood veneer materials on both sides

Note: Sink and range base cabinet tops are partially open allowing for easy installation.

CABINET BACKS

Dimension = .25" thick

Construction = plowed and captured into sides with a 3/4" recess

Material = engineered substrate with melamine or wood veneer materials on both sides

SHELVES

Dimensions = .75" thick

Construction

- banded on front edge
- 32 mm spaced shelf rests

Material = engineered substrate with melamine or wood veneer materials on both sides

CABINET INTERIORS

Material = melamine or natural maple wood veneer interior surfaces

Note: Open cabinets with interiors matched to the exterior may be available .

CABINET TOE KICKS

Dimensions

- recessed kicks are 3" deep x 4" high (standard)
- flush closed toe kicks available

Material = toe kick covers match exterior specie and finish

DRAWER BOXES

Dimensions

- sides = 5/8" thick
- bottom = 1/4" thick

Construction

- dovetailed
- bottoms plowed into all four sides
- drawer fronts screwed to drawer boxes

Material = solid hard wood

Slides

- concealed
- full extension
- ball bearing
- soft close available

DOORS AND DRAWER HEADS

Dimensions = available in both 3/4" and 1" thickness

Construction

- Framed Doors
 - both mortis & tenon and mitered (depends on door style selected)
 - floating solid wood panel (allows for natural wood expansion without affecting functionality of door)
- Non Framed Doors (3/4" thick only)
 - engineered substrate
 - available in wood and Italian foil veneers

Edge reveal = .0625" left and right, .125 top, 0 bottom. Clearance between adjacent doors or drawers = .125

Manufacturer: **Signature Custom Cabinetry, Inc.**
 Product Category: **Custom Frameless Cabinets**

Professional Memberships

Member
NKBA
 NATIONAL KITCHEN CABINET MANUFACTURERS ASSOCIATION

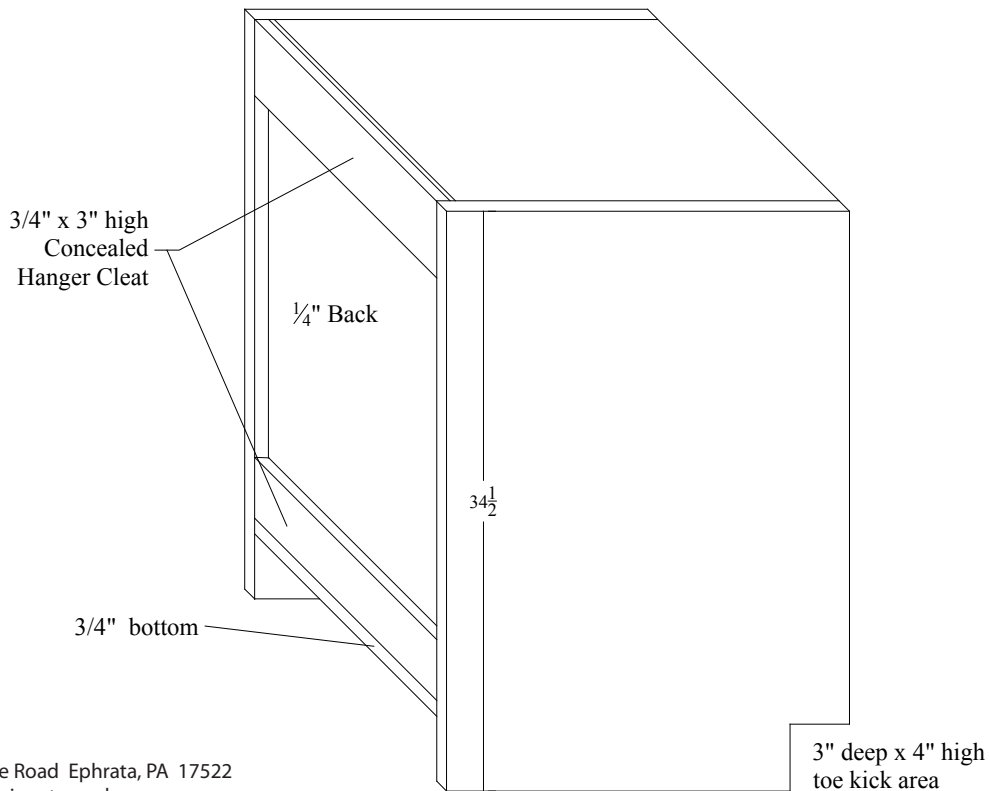
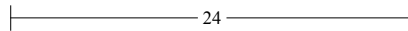
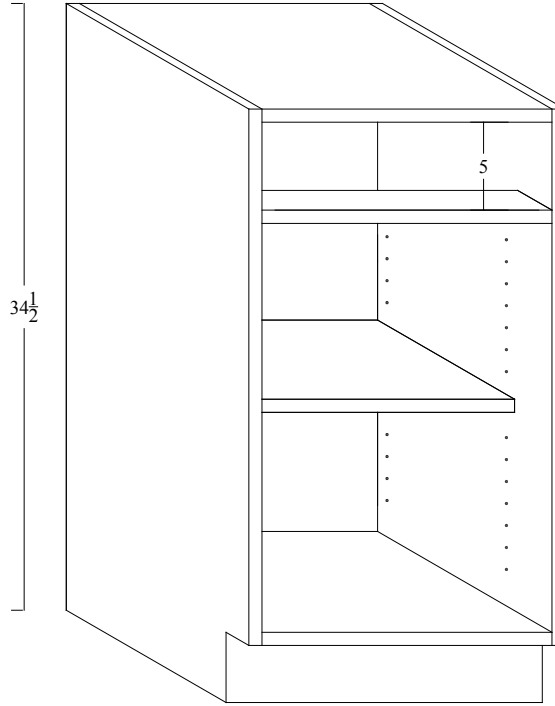
KCMA
 QUALITY, ADVOCACY, LEADERSHIP
 KITCHEN CABINET MANUFACTURERS ASSOCIATION



Architectural Specifications - Custom **Frameless** Cabinetry (continued)

MISCELLANEOUS

- Finishes
- both wipe on and sprayed applications (varies with colors and stains vs. paints)
 - sealer applied prior to topcoat
 - top coat = durable chemically resistant catalyzed conversion varnish
- Hinges
- concealed European cup hinges drilled into the back of door
 - 120 degree angle of opening
 - 6 way adjustment
 - OPTIONAL - soft close mechanism
- Hardware
- selection of complimentary decorative hardware



Architectural Specifications

Manufacturer: **Signature Custom Cabinetry, Inc.**
 Product Category: **Custom Frameless Cabinetry**

5-2009

434 Springville Road Ephrata, PA 17522
www.signaturecab.com

FRAMELESS CABINETRY

Eco-Friendly: This document is printed on FSC mixed papers which includes 10% post-consumer waste fiber.